

NEWSNOTE

VOLUME 1, ISSUE 4 OCTOBER 7, 2020

FROM THE PRINCIPAL'S DESK...

Happy Wednesday!

We have been practicing our fire drills and will soon be practicing our lockdown drills as well. We have tried to stress the importance of these drills to the students. Parents, please take a moment to reiterate this with your child. We have safety drills to ensure students and staff are prepared to quickly make their way to safety in the event of an emergency. We are making sure that during fire drills the students are wearing their masks and keeping a safe distance from one another. During our lockdown drills, I will not have the students hiding as they normally would. Teachers will just go over the procedure as to where they would hide in case of a real emergency.

With the cooler weather beginning, please remember to consult the uniform policy as to acceptable warmer clothing.

Cold Weather Items: The only acceptable cool weather tops to be worn during school hours are the SME spirit hoodie or 1/4 zip, which are available for purchase through the (HSA) Home School Association, the SME gym uniform sweatshirt, a solid navy/white/red cardigan sweater or a navy-blue fleece from a school approved vendor.

Please remember that there is no school this Friday, 10/9 or Monday, 10/12. Enjoy the long weekend!!

God's Peace and Love,
Mrs. Kwitowski

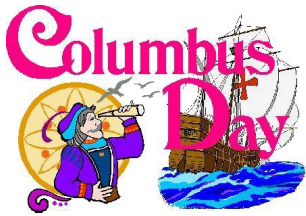
HEALTH SCREENING

Thank you for your support & cooperation with our COVID initiatives. The form will be emailed to every household Sunday evenings and is expected to be done prior to your child(ren) leaving for school Monday morning.

This form must be completed for each child. Please do not submit multiple names on the form.

Today you will find a COVID flow chart from the NYS DOH that we hope will also be a useful tool.

If you have questions at any time, please feel free to reach out to either the school nurse or principal.



UPCOMING EVENTS:

- 10/7 - Book Fair Ends
- 10/8 - Dress Down Day! (See pg 2 for info)
- 10/9 - **No School**, Staff PD Day, The building will be closed. Office staff available via e-mail.
- 10/12 - **No School**, Columbus Day
- 10/28 - Progress Report Upload, K-8
- 11/6 - Christian Witness Mass, 8:30
- 11/10 - **10:45 Dismissal**
- 11/11 - **No School**, Veterans Day

BY THE NUMBERS

SCRIP:

September 22, 2020 to September 28, 2020, the Scrip rebate profit earned towards tuition was **\$245.76**.

Collectively, St. Mary's goal is to sell \$30,000 in Scrip each month with a rebate goal of \$1,500.

Monthly Scrip Sales Goal	Monthly Scrip Profit Goal
\$30,000.00	\$1,500.00
September Sales Total	Year Profit-To-Date
\$28,590.00	\$1,357.86

Contact the Scrip office at scrip@smeschool.com to find out how you can support his fundamental program!

CANDY BAR SALE:

Online orders are preferred but hard copies of the form are available at any time.

Questions can be sent at any time to candybarsale@smeschool.com.

All flavors are \$1/bar, \$48/box.

Electronic Order form:

<https://forms.gle/eq1au7amGqRBrbLj6>



CANDY BAR SALE

We are excited to say that another order to the factory has been made! Thank you to those who have already requested &/or sold a box or two or three!

Orders can be placed at any time via the google form: <https://forms.gle/eq1au7amGqRBrbLj6>

Please email candybarsale@smeschool.com if you need the link emailed to you.

A hard copy of the order form is available on the NewsNote tab of the school website or you can email: candybarsale@smeschool.com.

This has historically been HSA's largest fundraiser for the school and the duration of the sale will depend on the demand.

Boxes contain 48 bars and cost just \$1 per bar. Factory mixed boxes as well as the ever popular 'build your own' option are available.

Payment will be due within 30 days of distribution by cash, check, charge (of 2 boxes or more) or Venmo by request. Thank you for your anticipated support of this delicious fundraiser!

HOME SCHOOL ASSOCIATION (PTA)

The Home School Association is a vital group of volunteers who work to ensure the positive growth of our school community. The HSA team will host a variety of fundraisers throughout the school year. Each fundraiser benefits the school and students directly.

Please check out the new SME Gear order form coming home today!

- We have already set up several socially distant fundraisers including:
- ◇ Candy Bar Sale featuring Gertrude Hawk Chocolate
 - ◇ Little Caesar's Pizza - Ends TODAY
 - ◇ Panera Bread Fundraiser: December 17th

LAST CALL:
Our book fair closes today!
Visit <https://www.scholastic.com/bf/fall2020> before it's too late!
The Little Caesars Order was due today. Did you remember to submit your order?
If you did not, please email secretary@smeschool.com.



INSIDE THIS ISSUE:

PRINCIPALS DESK	1
BY THE NUMBERS	1
NURSE NOTES	1
CANDY BAR SALE	1
HEALTH SCREENING	1
HOME SCHOOL ASSOCIATION	1
	1
	1
KITCHEN NEWS	2
SCRIP	2
SME GEAR	2
DRESS DOWN	2
FORMS & FLYERS	2
SME SUCCESS	2
FALL BOOKFAIR	2
HANDBOOK	2
DRESS DOWN	2
8TH GRADE INFO	2
STAY IN THE KNOW	2

NURSE NOTES

To help with the planning of upcoming birthday and holiday celebrations in school please be aware of the new procedures that need to be put in place due to ongoing health concerns and decreasing the spread of germs. We understand the importance of celebrating birthdays and holidays in school and we would like to do it as safely as possible and need your cooperation and understanding to keep the students and staff safe.

~All food must be peanut and tree nut free

~No unwrapped bulk, unlabeled or home baked items will be allowed

~Touching of other classmates food will not be allowed. Teachers will clean the outside of the box and then distribute the snacks to their students while wearing gloves. Please bring in snacks/treats that are individually wrapped from a factory sealed box. For example: fruit snacks in boxes, bags of chips inside a bag/box, or packaged crackers inside a box. Below are a few examples.

As always, please call with any questions or concerns.

Thank you and we look forward to celebrating with your child in school!

Mrs. Parker RN, BSN (parkerk@smeschool.com, 683-2112 x128)





ST. MARY'S ELEMENTARY SCHOOL

2 St. Mary's Hill
Lancaster, NY 14086

Phone: 716-683-2112
Fax: 716-683-2134
www.smeschool.com



UPON THIS HILL,
WE DO GOD'S WILL



A NOTE FROM THE KITCHEN

Order forms for Birthday Snacks are available on-line on the Lunch Menu link. Simply print out the appropriate form, include payment and send in with your child in advance of the celebrated day.

If you have any questions regarding the SME Lunch Program, please feel free to contact us at kitchenmanager@smeschool.com. You may also reach us by telephone at 683-2112 ext. 119. We will respond as soon as possible, keeping in mind that we serve lunch from 10:30 am until 1 pm.

The monthly menu is always available on our school website & will be uploaded to eSchool as well.

SME Kitchen

Tracy Hadsall & Jenny Fulciniti



SCRIP CORNER

So far, two families have hit the \$250 tuition credit!

Collectively, St. Mary's goal is to sell \$30,000 in Scrip each month, with a rebate profit goal of \$1,500. From September 1, 2020 to September 30, 2020 we sold **\$28,590.00** in Scrip, with a rebate profit of **\$1,357.86**. We fell a bit short of the goal this month, but we're confident that we can make it up in October!

When we work together on the \$1,500.00 monthly goal, it is less than a \$200 purchase in gift cards per family, per month, through the Scrip program. Scrip cards can be purchased for Tops Gasoline, Tops groceries, Amazon, Tim Hortons, paying your Kohl's bill, etc. I am sure we can all find easy ways to help with this goal. There is a locked box outside the school office, as well as in the back of the church, so that you can drop off orders whenever it is convenient for you!

Check out the flier in this week's electronic NewsNotes re: Bonus Fest: 4 Weekends of 2-day bonuses!

All Scrip sales are in the Rectory on Mondays, Wednesdays-Fridays from 8:00-3:00. As stated in the information packet, if you send your order into school with your child, your order will be sent home as soon as it has been filled. Feel free to reach out with any questions: scrip@smeschool.com

We thank you for your support in making the Scrip program a success for our school, our Parish and for our children! Please contact the Scrip office at scrip@smeschool.com to find out how you can support this fundamental program.

If you have any questions, please email scrip@smeschool.com

Conversations about school

When you think of parent involvement, do you picture volunteering in classrooms? That has been one way but research shows that supporting your child's education at home is even more important. Here are some conversation starters that will help you stay involved:

"Let's see what you worked on today."

"Show me what you have for homework."

"Describe a book you enjoyed today."

"Tell me what you learned that you'd like to know more about."

SME GEAR

Let's all show our pride in SME by wearing our gear!

Hoodies and ¼ zips (with SME uniform shirt underneath) and masks can be worn in school.

Order yours today using the order form with the NewsNotes, then return to school, Attn: SME Gear

Your order will be filled based upon availability.*

***Web store coming soon!**

Watch the NewsNotes for updates re: the opening of the web store, from which you can order your SME Gear anytime, from the comfort and ease of your own home. Don't forget that Grandparents, Aunts, Uncles and more will want to show their pride as well!



OUR SUCCESS DEPENDS ON YOU

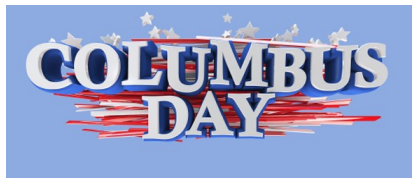
As per the tuition schedule that was included in your registration paperwork:

Family Service Hour & Fundraising Participation Responsibility is expected of each family. Regardless of parish affiliation and tuition rate, active involvement of all SME families is necessary to keep school expenses to a minimum, encourage community involvement, and assure continued success of our school. SME hopes to promote the true spirit of participation and volunteerism which is not compensated.

Family Service Hour & Fundraising Participation Responsibility is expected of each family. Responsibilities include 20 Service Hours per family and purchase and/or sell 3 Fall Fest tickets @ \$50 ea, 2 Mega Raffle tickets @ \$100 ea, 10 Golf Super Raffle tickets @ \$5 ea, and 1 box of chocolate @ \$48

We have had to adjust our fundraising plans with the current COVID restrictions and are revamping what would have been our Fall Fest and Mega Raffle into one big raffle. Stay tuned for more information!

Let's celebrate the discovery of America by dressing in Red, White & Blue on Thursday, 10/8!



A little fandom of the Bills 4-0 status is welcome too!

FALL BOOKFAIR

Our fall fair is an ONLINE only fair and ends today!

All purchases benefit our school and connect kids with new books, favorite characters, complete series, and more.

Help SME reach its goal of \$2000 in sales!

Visit our Book Fair Homepage and click "Shop Now" to get started:
<https://www.scholastic.com/bf/fall2020>

Happy reading,

Bernadette Bookmiller, *SME Bookfair Chair*

8TH GRADE INFO

If your child is planning on attending a Catholic High School, please don't forget to submit the signed record release form as indicated in your application confirmation email.

The Catholic High School Entrance Exam will be held on 11/21. Your child should take the exam at their first choice HS.

Information for Sacred Heart, St. Mary's High School & Canisius High School is included electronically this week.



DRESS DOWN

Congratulations to the Kusak Family who was drawn as the winner of the Russell's Certificate from our dress down on 9/25.



FLYERS & FORMS

Although we are going green as much as possible; hard copies of any flyer or form are always available and can be sent home with your child.

Please email Mrs. Kuhn (secretary@smeschool.com) at any time if you need a hard copy.

HANDBOOK

If you have not yet signed & returned the last page of the Parent/Student handbook please do so ASAP. Forms were due on 9/25.

If you are in need of another handbook, an electronic version can be emailed to you. Just the last page needs to be signed & returned.

STAY IN THE KNOW



Save the Date: 10/9 No School

Save the Date: 10/12 No School

Save the Date: 10/21 Fall Picture Re-Take Day

Save the Date: 10/28 Progress Report Upload

Save the Date: 11/10 10:45 Early Dismissal

Save the Date: 11/11 No School, Veterans Day

SME Gear is here!



Let's all show our pride in SME by
wearing our gear!



Hoodies and 1/4 zips (with SME uniform shirt underneath)
and masks can be worn in school.

Order yours today using the order form with the
NewsNotes, then return to school, Attn: SME Gear
Your order will be filled based upon availability.*



***Web store coming soon!**



Watch the NewsNotes for updates re: the opening
of the web store, from which you can order your
SME Gear anytime, from the comfort and ease of
your own home. Don't forget that Grandparents,
Aunts, Uncles and more will want to show their
pride as well!



St. Mary's Elementary Gear Order Form

updated 10/2/20

Name of Item		Item #	Size				Price	Quantity	Total Owed
			S	M	L	XL			
	1/4 Zip Sweatshirt - Adult	ST 357					\$30.00		
	1/4 Zip Sweatshirt - Youth	YST 357					\$28.00		
	Hoodie Sweatshirt - Adult	PC 78 H					\$25.00		
	Hoodie Sweatshirt - Youth	PC 90 YH					\$22.00		
	Long Sleeve T-shirt - Adult	PC 54 LS					\$15.00		
	Long Sleeve T-shirt - Youth	PC 54 YLS					\$14.00		
	Baseball Cap	CP 80	Adult				\$17.00		
	Baseball Cap	CP 80 Y	Youth				\$15.00		
	Navy Knit Beanie/ Winter Hat	STC 20	One Size Fits All				\$15.00		
	Navy Face Mask	PAMASK 05	One Size Fits All				\$10.00		
Please make checks payable to: St. Mary's Elementary									

Total items Total cost

Family Name: _____

Phone: _____

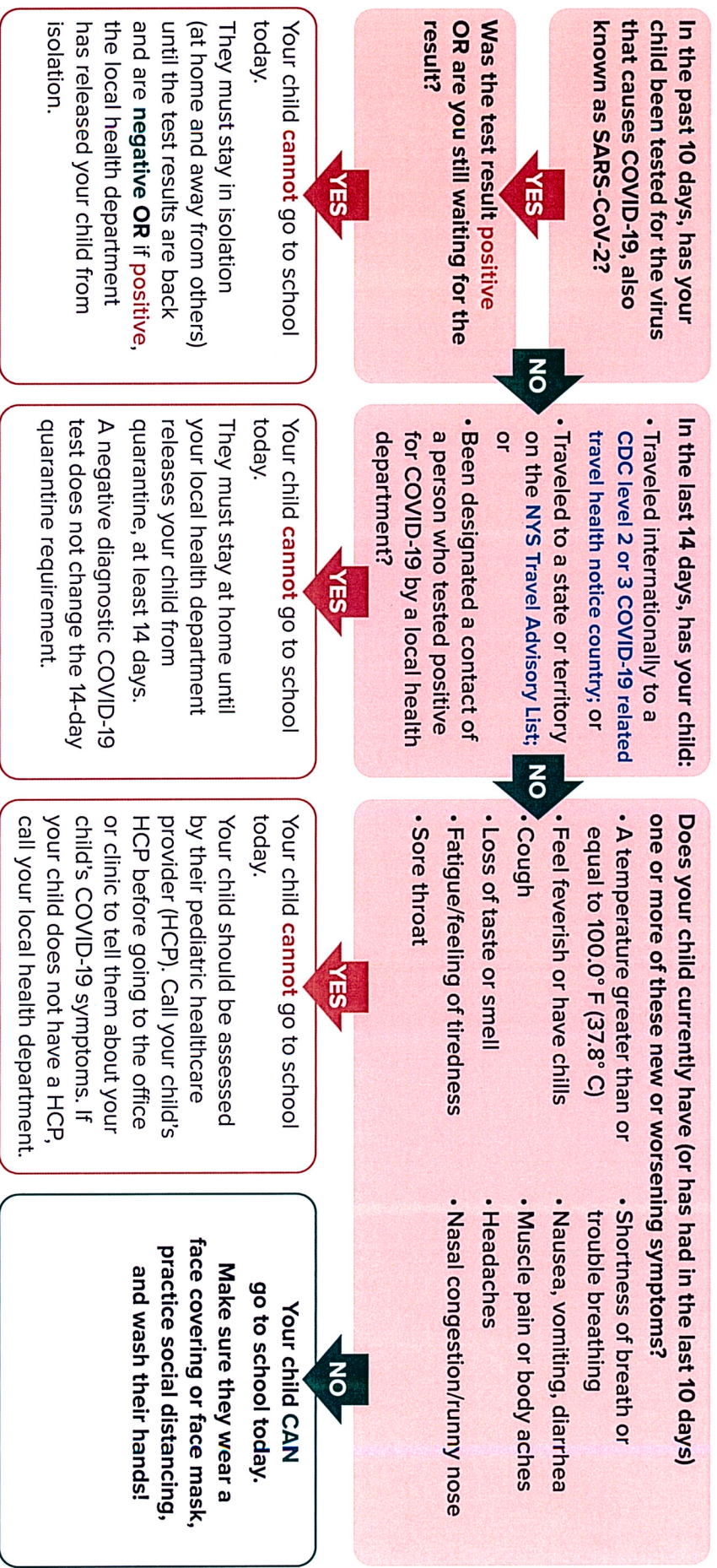
Oldest Child: _____

Homeroom: _____



NYSDOH COVID-19 In-Person Decision Making Flowchart for Student Attendance

Can My Child Go To School Today?



Report absences, symptoms, and positive COVID-19 test results to your child's school.

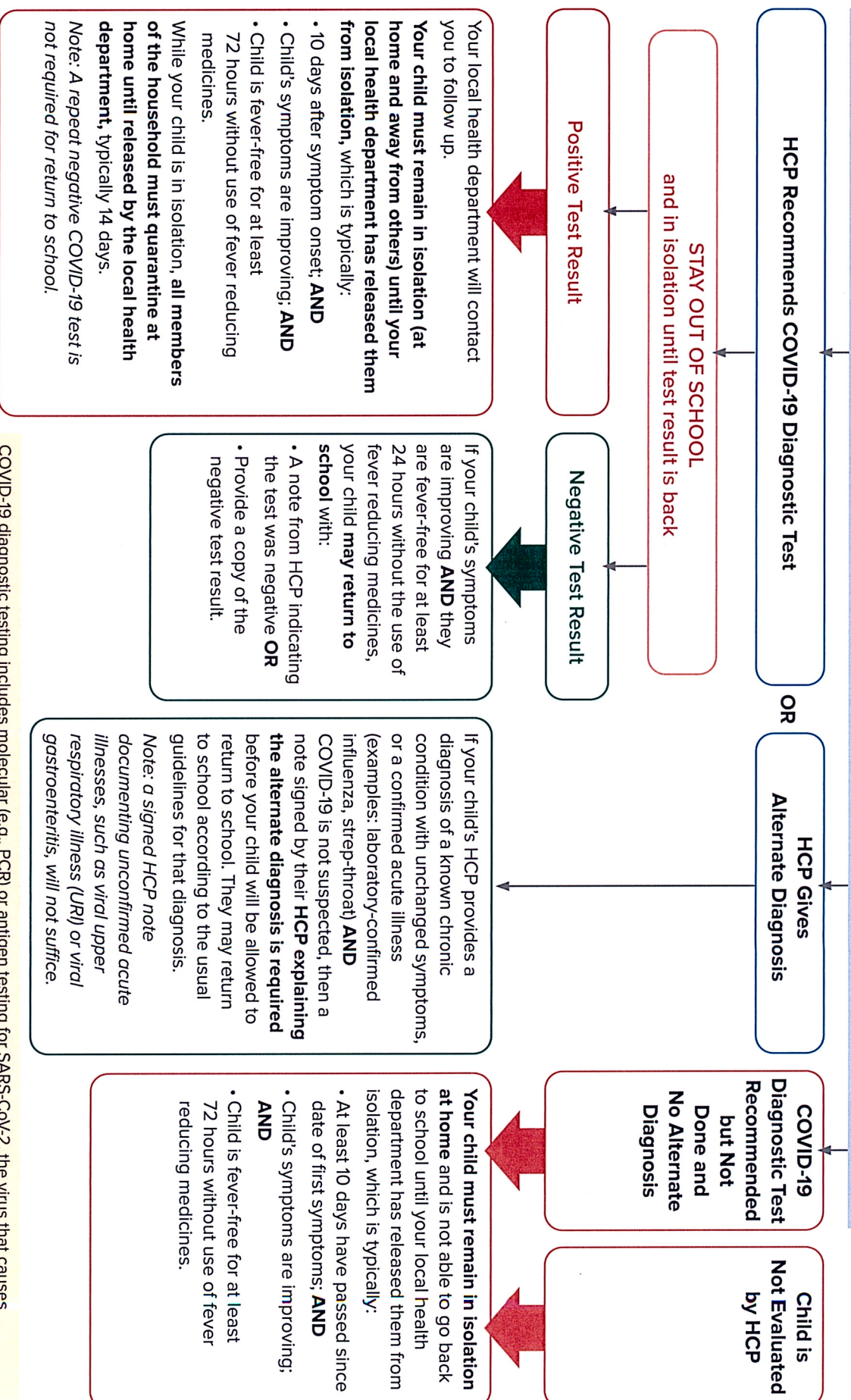
SEEK IMMEDIATE MEDICAL CARE IF YOUR CHILD HAS:

- Trouble breathing or is breathing very quickly
- Prolonged fever
- Is too sick to drink fluids
- Severe abdominal pain, diarrhea or vomiting
- Change in skin color - becoming pale, patchy and/or blue
- Racing heart or chest pain
- Decreased urine output
- Lethargy, irritability, or confusion



My child has COVID-19 symptoms. When can they go back to school?

HEALTHCARE PROVIDER (HCP) EVALUATION FOR COVID-19 (can be in-person or by video/telephone as determined by HCP)



COVID-19 diagnostic testing includes molecular (e.g., PCR) or antigen testing for SARS-CoV-2, the virus that causes COVID-19. Diagnostic testing may be performed with a nasopharyngeal swab, nasal swab, or saliva sample, as ordered by the health care provider and per laboratory specifications. At times, a negative antigen test will need to be followed up with a confirmatory molecular test. Serology (antibody testing) cannot be used to rule in or out acute COVID-19.

BONUS  FEST

NEW 2-DAY BONUSES

EVERY FRIDAY & SATURDAY • OCTOBER 9 – 31

Earn big with 4 weekends of 2-day bonuses

Bonus Fest is coming Oct 9 – 31. Each weekend features a different lineup of brands on bonus for 2 days only. Take advantage of the extra earning to make an even bigger impact for our organization.

Things to know:

- Bonuses start Friday morning and end Saturday night.
- Offers will be announced each Friday.
- All gift card types (eGift cards, physical gift cards, and money added to reloadable cards) are included.

“Bonus Fest is so fun. I set an alarm to remind myself to check my phone and see what brands are on bonus. Then I stock up on all the brands I love and even start shopping for holiday gifts.”

Linda T., Earns for school hockey

Go to the RaiseRight mobile app or ShopWithScrip.com for more information.

1. Enroll in the RaiseRight mobile app or on ShopWithScrip.com with our organization's enrollment code: just email scrip@smeschool.com to get started.
2. Seamlessly check out and get eGift cards and reloads faster by securely paying online with a bank account or credit card.

ShopWithScrip®



Get the app
www.RaiseRight.com



You're Invited to Join Girl Scouts!

Whether your girl is a dreamer, comedian, explorer, or something uniquely her own, she's welcome at Girl Scouts! You and your girl are both invited to join us to meet other girls in her grade, try out some fun activities, and get answers to any questions you may have.

Girl Scouts is not cancelled and we continue to adapt to meet the needs of girls today. In these uncertain times, Girl Scouts is here to provide consistency and stability for your girl. She can make new friends by connecting with a troop, attending virtual events, and experiencing an environment that is for girls, by girls. Plus every year she renews, she can earn tuition rewards for college. Financial aid is available. Visit gswny.org/join for more information or flip this sheet over for event information.

Why Girl Scouts?

RATED #1
After-School
Program by
Parents
Magazine

Girl Scouts at Home

89%

of parents say their
daughters are happier
because of Girl Scouts

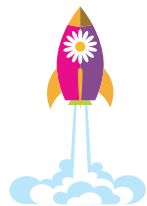
OCTOBER 2020

SUNDAY	MONDAY	TUESDAY	WEDNESDAY	THURSDAY	FRIDAY	SATURDAY
				1	2	3
	Pop-in Q&A Sessions					
4	5 The Cookie Jar <i>Virtual Food for Thought</i>	6 	7 The Cookie Jar <i>Virtual Food for Thought</i>	8 	9	10
11	12 The Cookie Jar <i>Virtual Food for Thought</i>	13 	14 The Cookie Jar <i>Virtual Food for Thought</i>	15 	16 PAJAMA PARTY	17
18	19 The Cookie Jar <i>Virtual Food for Thought</i> 	20 DISCOVER GIRL SCOUTS Two Sessions! 	21 The Cookie Jar <i>Virtual Food for Thought</i> TRUNK OR TREAT	22 	23 GLOW DANCE PARTY TRUNK OR TREAT	24 TRUNK OR TREAT
25	26 The Cookie Jar <i>Virtual Food for Thought</i>	27 DISCOVER GIRL SCOUTS 	28 The Cookie Jar <i>Virtual Food for Thought</i>	29 	30	31

Learn more about these sign-up events and more at bit.ly/gswnysignupevents

Upcoming Sign-Up Events

The Cookie Jar This video series is designed *Virtual Food for Thought* to help women navigate uncertain times. Join us live on Facebook Mondays and Wednesdays **beginning October 5.**



Our girl-centered **Kindergarten Success Series** feature 30 minute sessions that are free and open to any girl currently enrolled in kindergarten. We'll help prepare her for all of the new friends, new responsibilities, and for the big changes school brings. Sign up for one of two upcoming series at bit.ly/gswnyKready2020

Tuesdays at 4:30 p.m.
October 6, 13, 20, & 27

Thursdays at 6 p.m.
October 8, 15, 22, & 29



Join us for a virtual pajama party! Invite a friend, and make new ones, with Girl Scouts—it's all FREE! This is a Zoom Party for girls entering kindergarten through 6th grade.

Friday, October 16 | 6:30 to 8 p.m.

Register at bit.ly/gswnypjparty10-16

DISCOVER GIRL SCOUTS

You're invited to watch our Facebook Live Events on **October 20 from 12 to 1 p.m. and 7 to 8 p.m., and October 27 from 12 to 1 p.m.,** and find out what Girl Scouts is all about! You'll learn more about Girl Scouts, how to join, meet our awesome staff, and sign up same day!

HALLOWEEN WEEK

We're getting into the spirit with a whole week of Halloween sign-up events! On Monday, we're holding a **Virtual Halloween Party for girls**; Friday a **virtual Glow Dance Party**; and **five in-person Trunk or Treat registration events**! Learn more about our Halloween Week events at bit.ly/gswnysignupevents



Connect TO A NEW Girl Scouts Virtual Troop

What's the benefit of a virtual troop? Make new friends from all over Western New York! Troops are a group of girls who have fun together, learn important life skills like money management and team work, and keep the creativity flowing!

Daisy Girl Scout (girls in Kindergarten or 1st grade)

- Troop 63455 | Tuesdays 4-5pm | Starting Oct. 13
- Troop 60655 | Tuesdays 6-7pm | Starting Oct. 20

Brownie Girl Scout (girls going into 2nd or 3rd grade)

- Troop 60521 | Thursdays 4-5pm | Starting Oct. 15
- Troop 34475 | Thursdays 6-7pm | Starting Oct. 22

Junior Girl Scout (girls going into 4th or 5th grade)

- Troop 31342 | Mondays 4-5pm | Starting Oct. 26
- Troop 30558 | Mondays 6-7pm | Starting Oct. 19

To register, join Girl Scouts today!. When you get to the troop screen, use the troop numbers listed above with the right level.



Join Girl Scouts | Step-by-Step

1. Go to www.gswny.org and click JOIN TODAY
2. Select Girl or Adult Registration
3. Enter your contact information
4. Enter "Troop #" in the troop number field OR enter zip code and look for troops in your area
5. Fully complete the process, including payment, to secure your spot!
6. Can't find the troop? You can select "Unsure" or contact Customer Care at: 1-888-837-6410 or customercare@gswny.org

Questions? Call 1-888-837-6410 or email Join.Us@gswny.org



BUFFALO ACADEMY OF THE SACRED HEART

An all-girls, Catholic, college-preparatory high school, founded in 1877 by the Sisters of St. Francis

[ABOUT SHA](#) [ADMISSIONS](#) [ACADEMICS](#) [ATHLETICS](#) [ARTS](#) [ACADEMY LIFE](#) [SUPPORT SHA](#)



Open House

Please join us for Open House on Sunday, October 18 from 10 a.m. - 3:30 p.m. This is a great opportunity to tour our beautiful building, meet faculty, staff, students and coaches. Tours will be spaced and all COVID guidelines will be followed. Reservations are required and each time slot can accommodate an 8th grade student and up to two family members. No exceptions, please. **Due to space limitations, we are limiting this event to 8th grade families, only.**

If you are unable to attend Open House or have a daughter in 6th or 7th grade, please attend our Virtual Forums on Thursday, October 22 and/or Thursday, October 29. More information and a link to registration can be found below.

In addition, in-person private tours for 8th grade families are offered weekdays beginning Wednesday, October 20. If you would like to make an appointment, please call the Admissions Office, 834-2101 ext. 311.

Shadow Days

Prospective students are paired with freshwomen and follow them through a typical day at SHA. Due to COVID-19, we will not be able to accommodate 8th grade girls in Fall 2020. We will, however, create an opportunity for your daughter to virtually meet both SHA students and faculty, based on her specific interests. Please complete the Shadow Request Form on the SHA website if you wish to participate in this experience.

www.sacredheartacademy.org

Competence. Conscience. Compassion.



Experience it for yourself at Canisius High School's

OPEN HOUSE

October 17, 18, and 20

Register: canisiushigh.org/openhouse

Space is limited. Pre-registration required

CANISIUS HIGH SCHOOL

1180 Delaware Avenue, Buffalo, NY 14209

716.882.0466 | canisiushigh.org | @canisiushs



St. Mary's High School



St. Mary's is thrilled to welcome our prospective students and families onto campus safely for in-person tours and meet and greets with administration, faculty, staff, and current students.

There are several ways to experience life at St. Mary's in the Fall!

Wednesday, October 14th from 4:00 to 7:30 p.m.

Open House – for 5th, 6th, 7th, and 8th grade students

This is your opportunity to tour our campus and get a sense for what St. Mary's is all about. A current student will be your tour guide as you explore the building and meet teachers, coaches, and administration. You must preregister for this event, as there are a limited number of time slots available in an effort to ensure the safety of all of our guests. A health screening will also be emailed to you the day prior to your arrival.

Reserve your spot today: <https://smhlancers.org/open-house-2020/>

Monday, November 4th to Wednesday, November 6th from 4:00 to 6:00 p.m.

Entrance Exam (HSPT) Review Course – for 8th grade students

Make sure you're ready to take the High School Entrance Exam! Our review course goes over each part of the exam, as students rotate between Math and English reviews and includes test-taking tips and strategies to gain that competitive edge!

Our review course will be held in our socially distant classrooms and is led by St. Mary's faculty.

The cost for the review course is \$100, and you can sign up here: <https://smhlancers.org/register-for-hspt/>

Saturday, November 21st from 8:00 to 12:00 p.m.

High School Entrance Exam (HSPT) – for 8th grade students

All students looking to become a Lancer and member of the Class of 2025 must register to take the High School Entrance Exam with us. Students' exam scores also help us determine how to allocate scholarships. You can register for just the exam or the exam and review course here: <https://smhlancers.org/register-for-hspt/>

Various Dates in October – December

Lancer For a Day Program – for 8th grade students

Spend a school day with us! Sit in on classes, walk the halls – become a Lancer! Spots are limited and precautions will be taken in order to ensure the safety of our students and guests. Head here for more info:

<https://smhlancers.org/shadow-days/>

We have taken and will continue to take the proper precautions and measures to ensure the safety of all of our guests, students, and staff at this time. However, we understand that some prospective families might be uncomfortable with in-person visits. Contact Andrea Drabik, Dean of Student Life & Admissions so that we can work together to create a plan that works best for you!



Cozy sweats in our core weight.

- 7.8-ounce, 50/50 cotton/poly fleece
- Air jet yarn for a soft, pill-resistant finish

Due to the nature of 50/50 cotton/polyester neon fabrics, special care must be taken throughout the printing process.

CARE INSTRUCTIONS

Machine wash cold, inside out with like colors. Only non-chlorine bleach, when needed. Tumble dry low. Do not iron.

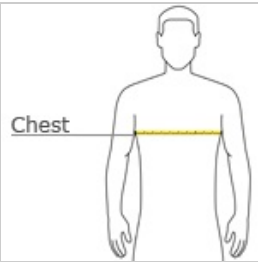


front



back

HOW TO MEASURE



CHEST WIDTH
Measure under the arm and around the fullest part of the chest with arms down, keeping tape horizontal.

SIZE CHART

	S	M	L	XL	2XL	3XL	4XL
Chest	35-37	38-40	41-43	44-46	47-49	50-53	54-57

COLOR INFORMATION

 Aquatic Blue PMS 2389C	 Ash PMS COOL GRAY 3C	 Athletic Heather PMS COOL GRAY 7C	 Candy Pink PMS 189C	 Cardinal PMS 7638C	 Carolina Blue PMS 7682C	 Charcoal PMS COOL GRAY 11C	 Clover Green PMS 347C	 Dark Chocolate Brown PMS 412C	 Dark Green PMS 560C	 Dark Heather Grey PMS 7540C
 Gold PMS 137C	 Graphite Heather	 Heather Athletic Maroon PMS 7644C	 Heather Dark Chocolate Brown	 Heather Navy PMS 2379C	 Heather Purple PMS 7672C	 Heather Red PMS 703C	 Heather Royal PMS 7684C	 Heather Sangria PMS 2046C	 Jet Black PMS NTR BLACK C	 Kelly PMS 340C
 Light Blue PMS 278C	 Lime PMS 367C	 Maroon PMS 490C	 Medium Grey PMS 2332 C	 Natural PMS 9185C	 Navy PMS 2380C	 Neon Blue PMS 801C	 Neon Green PMS 902C	 Neon Orange PMS 811C	 Neon Pink PMS 926C	 Neon Yellow PMS NO MATCH
 Olive	 Orange	 Purple	 Red	 Royal	 Sand	 Sangria	 Sapphire	 Silver	 Steel Blue	 Teal



A no-frills t-shirt in our classic silhouette-with a very friendly price.

- 5.4-ounce, 100% cotton
- 98/2 cotton/poly (Ash)
- 90/10 cotton/poly (Athletic Heather)
- 50/50 cotton/poly (Dark Heather Grey, Heather Navy)
- 1x1 rib knit cuffs

Please note: This product is transitioning from heat transfer labels to tear-away labels. Your order may contain a combination of both labels.

CARE INSTRUCTIONS

Machine wash cold, inside out with like colors. Only non-chlorine bleach when needed. Tumble dry medium, medium/hot iron. Do not iron decoration.

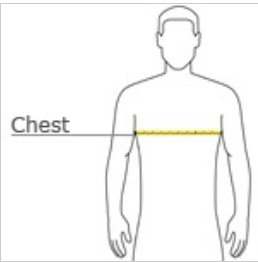


front



back

HOW TO MEASURE













CHEST WIDTH
Measure under the arm and around the fullest part of the chest with arms down, keeping tape horizontal.

SIZE CHART

	S	M	L	XL	2XL	3XL	4XL
Chest	35-37	38-40	41-43	44-46	47-49	50-53	54-57

COLOR INFORMATION

 Aquatic Blue PMS 2389C	 Ash PMS COOL GRAY 3C	 Athletic Heather PMS COOL GRAY 7C	 Athletic Maroon PMS 209C	 Charcoal PMS COOL GRAY 11C	 Dark Green PMS 560C	 Dark Heather Grey PMS 7540C	 Gold PMS 137C	 Heather Navy PMS 2379C	 Jet Black PMS NTR BLACK C	 Kelly PMS 340C
 Light Blue PMS 278C	 Lime PMS 367C	 Navy PMS 2380C	 Orange PMS 172C	 Purple PMS 7672C	 Red PMS 200C	 Royal PMS 2133C	 Sangria PMS 2046C	 White	 Yellow PMS 127C	



An indispensable t-shirt in our classic silhouette-- with a very friendly price.

- 5.4-ounce, 100% cotton
- 90/10 cotton/poly (Athletic Heather)
- 50/50 cotton/poly (Dark Heather Grey, Heather Navy, Neon Pink)
- 1x1 rib knit cuffs
- Please note: This product is transitioning from heat transfer labels to tear-away labels. Your order may contain a combination of both labels.

CARE INSTRUCTIONS

Machine wash cold, inside out with like colors, only non-chlorine bleach when needed. Tumble dry medium. Medium/hot iron, do not iron decoration.

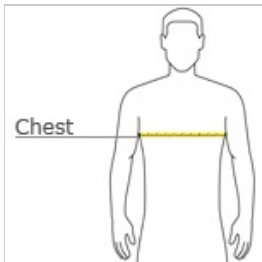


front



back

HOW TO MEASURE




CHEST WIDTH

Measure under the arm and around the fullest part of the chest with arms down, keeping tape horizontal.

SIZE CHART

	XS	S	M	L	XL
Size	4	6/8	10/12	14/16	18/20
Chest	25-26	26-28	28-30	30-32	32-35

COLOR INFORMATION

										
Aquatic Blue PMS 2389C	Athletic Heather PMS COOL GRAY 7C	Athletic Maroon PMS 209C	Charcoal PMS COOL GRAY 11C	Dark Green PMS 560C	Dark Heather Grey PMS 7540C	Heather Navy PMS 2379C	Jet Black PMS NTR BLACK C	Kelly PMS 340C	Lime PMS 367C	Navy PMS 2380C
										
Orange PMS 172C	Purple PMS 7672C	Red PMS 200C	Royal PMS 2133C	Sangria PMS 2046C	White	Yellow PMS 127C				



Sport-Tek® Youth PosiCharge® Competitor™ 1/4-Zip Pullover. YST357



This lightweight pullover locks in color and wicks moisture. It's versatile enough for year-round wear.

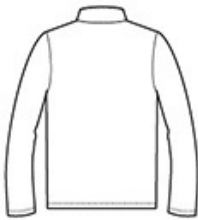
- 3.8-ounce, 100% polyester interlock with PosiCharge technology
- Tear-away removable label
- Cadet collar
- Reverse coil zipper
- Set-in sleeves
- Open cuffs and hem

CARE INSTRUCTIONS

Machine wash cold with like colors: only non-chlorine bleached when needed, tumble dry low, do not use fabric softener, remove promptly, cool iron if necessary, do not dry clean.

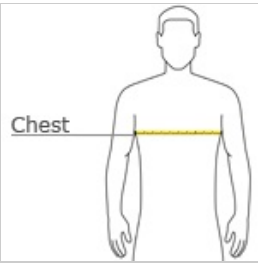


front



back

HOW TO MEASURE



CHEST WIDTH
Measure under the arm and around the fullest part of the chest with arms down, keeping tape horizontal.

SIZE CHART

	XS	S	M	L	XL
Size	4/5	6/8	10/12	14/16	18/20
Chest	22-24	25-27	28-30	30-32	32-34

COLOR INFORMATION



Black
PMS NTR BLACK
C



Grey Concrete
PMS COOL GRAY
10C



Iron Grey
PMS 7540C



True Navy
PMS 533C



True Royal
PMS 7686C



Sport-Tek® PosiCharge® Competitor™ 1/4-Zip Pullover. ST357



This lightweight pullover locks in color and wicks moisture. It's versatile enough for year-round wear.

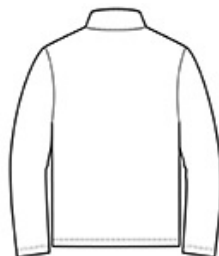
- 3.8-ounce, 100% polyester interlock with PosiCharge technology
- Removable tag for comfort and relabeling
- Cadet collar
- Reverse coil zipper
- Set-in sleeves
- Open cuffs and hem

CARE INSTRUCTIONS

Machine wash cold with like colors. Do not bleach. Do not use fabric softener. Tumble dry low. Remove promptly. Cool iron if needed. Do not dry clean

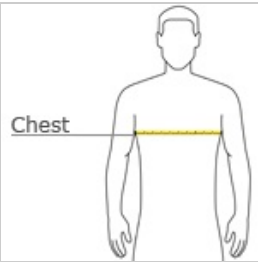


front



back

HOW TO MEASURE



CHEST WIDTH
Measure under the arm and around the fullest part of the chest with arms down, keeping tape horizontal.

SIZE CHART

	XS	S	M	L	XL	2XL	3XL	4XL
Chest	32-34	35-37	38-40	41-43	44-46	47-49	50-53	54-57

COLOR INFORMATION

Atomic Blue	Black PMS NTR BLACK C	Grey Concrete PMS COOL GRAY PMS 7540C 10C	Iron Grey PMS 7540C	Lime Shock PMS 375C	True Navy PMS 533C	True Red PMS 200C	True Royal PMS 7686C	White